



MORCO | 

Bellfort Roof Awning



## Bellfort Roof Awning

---

### Index

- 5 History & Present Day
- 7 Design & Craftsmanship

### Bellfort Roof Awning

- 12 Overview
- 13 Dimensions
- 18 Configuration

### Fixing Specifications

- 22 Fixing Options
- 24 Brackets





Our Bellfort® Roof Awning is a retractable terrace awning on fixed rails.

Exceptional strength utilising zipped channels and storm-proof fabric.

It is an excellent choice for outdoor commercial areas especially suited to exposed locations as all components are 100% corrosion resistant.

## History

Morco was founded in London in 1956 by Mr G H Morrison, as a specialist manufacturer of canopies, covers, sails and tarpaulins for London's busy waterways. His popularity with employees and customers saw his business grow steadily. 1967 saw Morco move to the current Riverside location on the Greenwich Peninsula. In 1978, his son George took over. Keen to utilise his design background, he began to construct specialist awnings on a much larger scale. With his fanatical attention to detail, Morco soon gained a reputation across the UK for outstanding quality awnings.



## Present Day

For over 50 years, Morco have established themselves as the nation's leading design and manufacturer of custom-made awnings and canopies. It remains a family run business that prides itself on its heritage. There remains a dedicated and skillful team of craftsman and designers who all play a vital role in Morco's success story. The majority of products are still hand-built in our London workshop and a small amount are produced in Germany. Morco are keen to lead and focus heavily on pioneering new techniques or materials to improve our end products and deliver more options to our customers.







## Design

Morco have a talented and experienced design team who are skilled at working with or collaborating with architects, design teams, contractors or even working independently to produce an awning solution. We can provide sophisticated 3D-modelling on request, as well as supplying fabric samples. Morco also offer clients the opportunity to utilise their cutting-edge RAGS branding and pattern system which has revolutionised the traditional design parameters.



## Craftsmanship

The Morco manufacturing team are dedicated and skilled craftsman who are proud of maintaining Morco's on-going reputation for producing awnings of outstanding build quality.













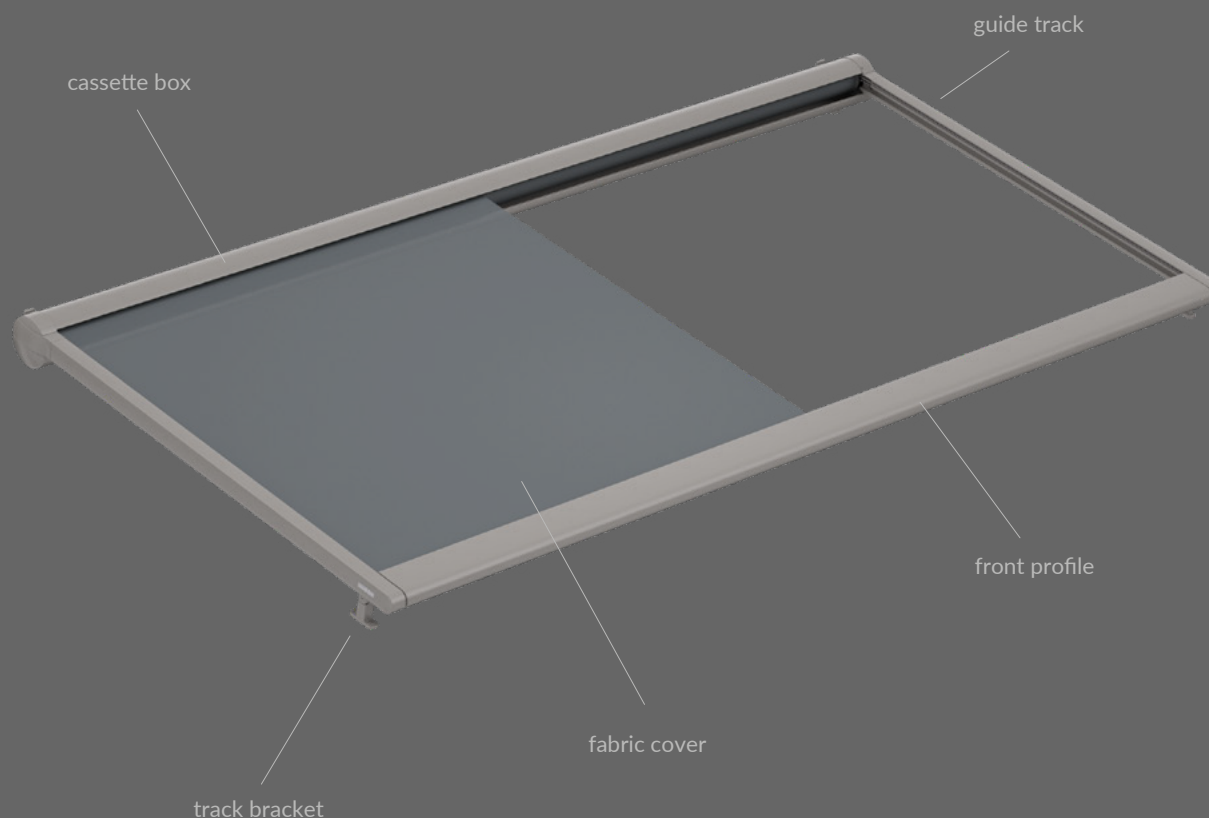








## Bellfort Roof Awning | Overview



**Maximum width:** 1 section: 6.0-7.0m | 2 sections: 12.0-14.0m | 3 sections: 18.0-21.0m. (Up to 5 sections can be coupled together).

**Maximum projection:** 4.5m (up to 6.0-7.0m depending on the width).

**Pitch\*:** subject to suitable fixing conditions.

**Operation:** electric (either side of the roller).

**Wind resistance:** Class 3 | Beaufort 6 (48kmph / 30mph)

\*Note: if the awning's angle of pitch is less than 25% = 14°, measured from the horizontal, it must not be opened in the rain. There is a risk of puddles forming in the fabric which could damage the awning or cause it to fall.



### Single unit

		Awning fixture width												Minimum fixture width	
		150	200	250	300	350	400	450	500	550	600	650 <sup>1)</sup>	700 <sup>1)</sup>	Hard-wired motor	Radio-controlled motor
Order dimensions		60 150	151 200	201 250	251 300	301 350	351 400	401 450	451 500	501 550	551 600	601 650	651 700		
H	150													60 [73]	70 [83]
	200														
	250														
	300														
	350														
	400 <sup>2)</sup>	•	•	•	•	•	•	•	•	•	•	•	•		
	450 <sup>2)</sup>	•	•	•	•	•	•	•	•	•	••	••	••		
	500 <sup>2)</sup>	•	•	•	•	•	•	•	•	••	••	••	—		
	550 <sup>2)</sup>	•	•	•	•	•	•	•	••	••	••	—	—		
	600 <sup>2)</sup>	•	•	•	•	•	•	••	••	••	••	—	—		
	650 <sup>2)</sup>	•	•	•	•	•	••	••	••	••	—	—	—		
	700 <sup>2)</sup>	••	••	••	••	••	••	••	••	—	—	—	—		

dimensions in cm

1) = depending on the fixture combination, an additional central cassette support is required from a fixture width of 601 cm, and a central support for any cover support tube from a fixture width of 451 cm.

2) = from an extension of 401 cm, an additional track bracket per track is required

• = 1 cover support tube, if unit is without tracfix

•• = 2 cover support tubes, if unit is without tracfix

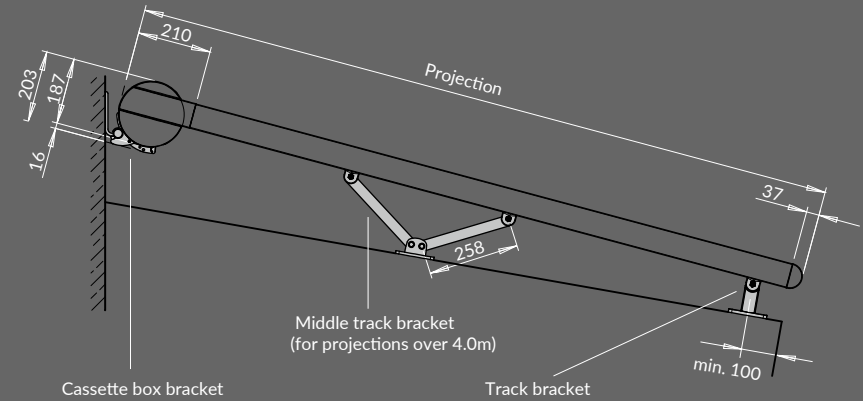
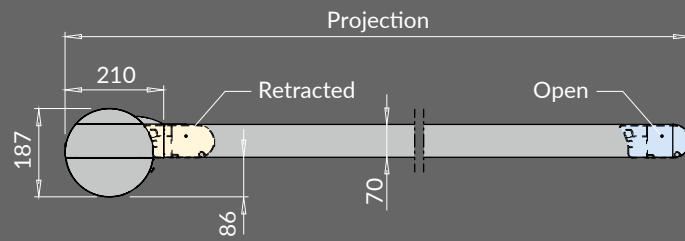
[...] = dimensions in the case of tracfix units

H = extension

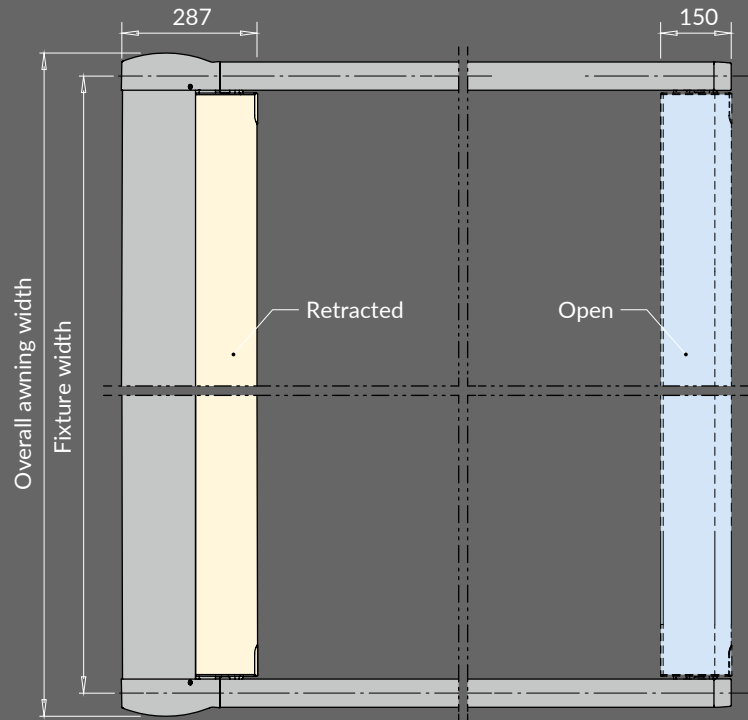
	= tracfix (optional)
	= tracfix ist not available

## Bellfort Roof Awning | Dimensions II

Side View

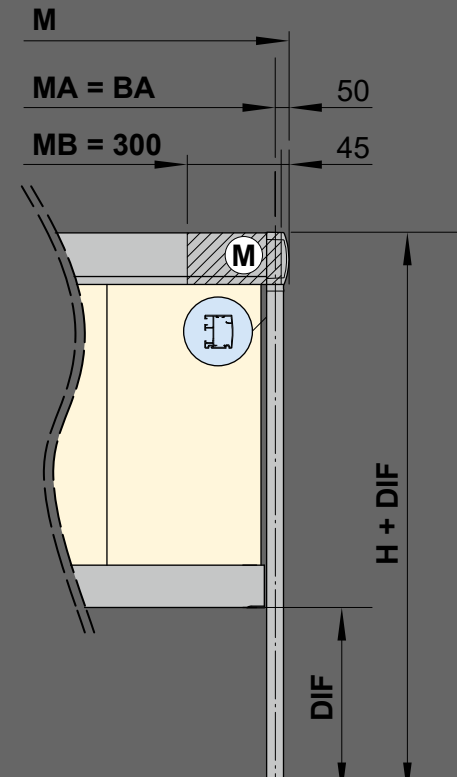
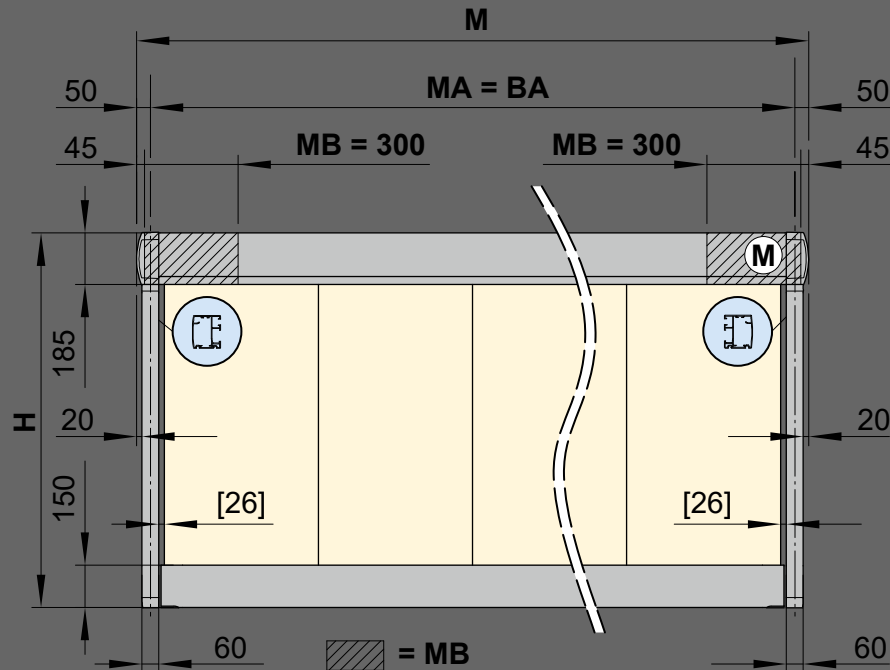


Plan View



dimensions in mm





[...] = dimensions of the cover gap in a standard unit,  
no cover gap in units with tracfix system

**BA** = width between fixture points

**DIF** = difference in measurement

**H** = *order dimension* = extension

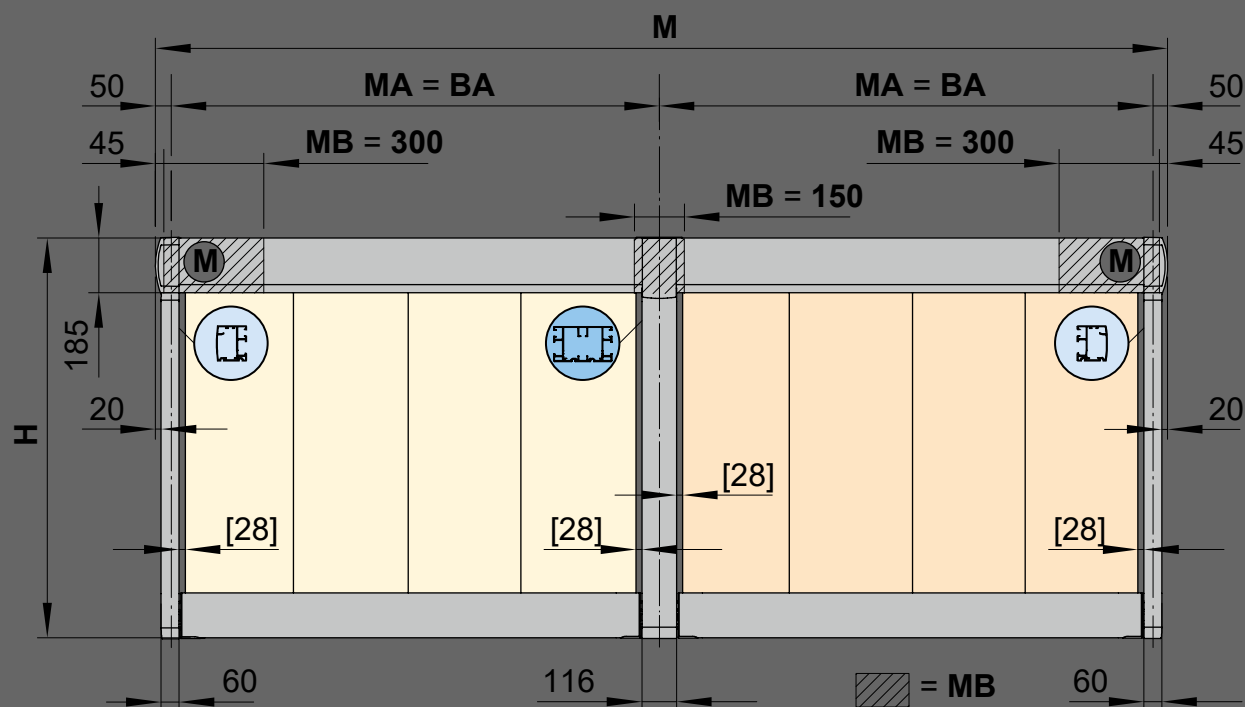
**M** = overall awning width MA + 100 mm

**MA** = *order dimension* = awning fixture width = fixture width

**MB** = bracket fixture range

Ⓜ = motor

dimensions in mm



[...] = dimensions of the cover gap in a standard unit,  
no cover gap in units with tracfix system

**BA** = width between fixture points

**DIF** = difference in measurement

**H** = *order dimension* = extension

**H1** = longer extension

**H2** = shorter extension

**M** = overall awning width MA + 100 mm

**MA** = *order dimension* = awning fixture width = fixture width

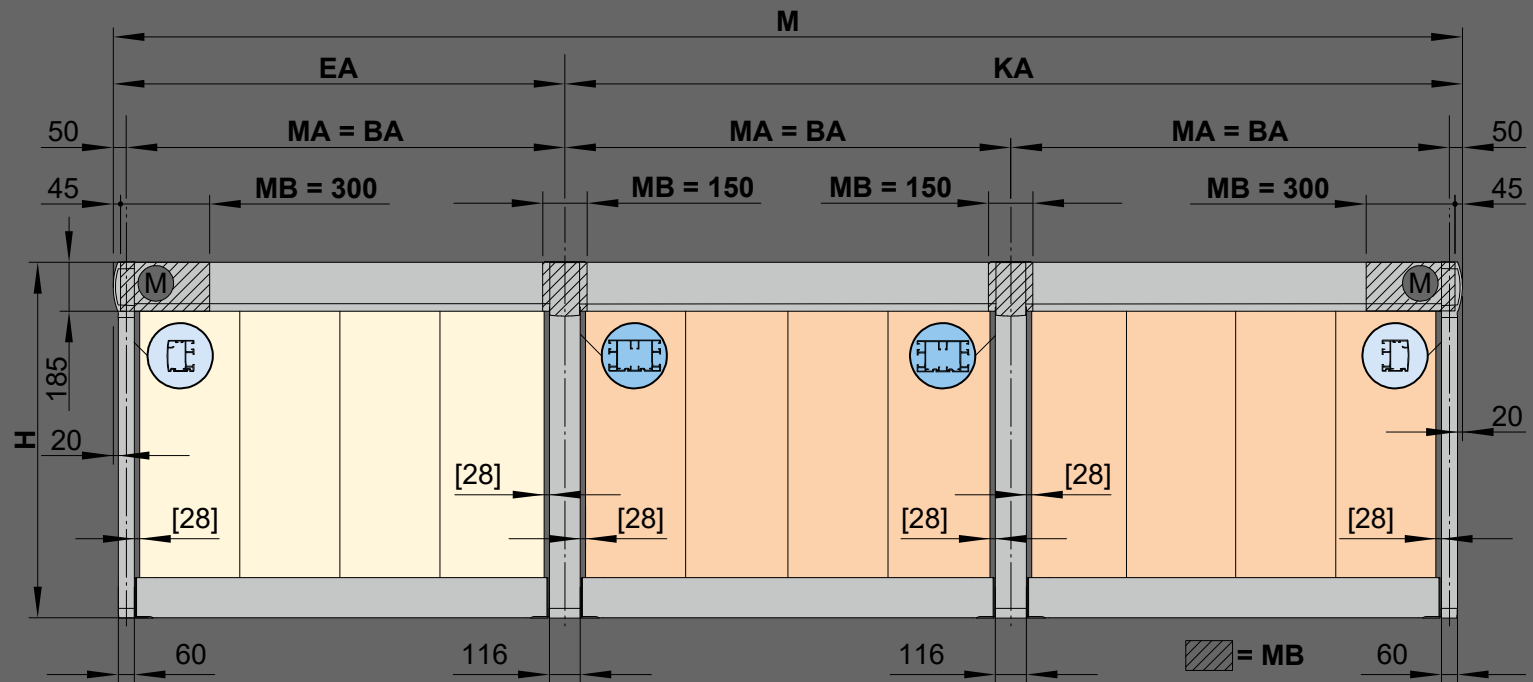
**MB** = bracket fixture range

Ⓜ = motor

dimensions in mm

## Bellfort Roof Awning | Dimensions V

Coupled unit, 3 fields, 2 motors



[...] = dimensions of the cover gap in a standard unit,  
no cover gap in units with tracfix system

**BA** = width between fixture points

**DIF** = difference in measurement

**EA** = single unit

**H** = *order dimension* = extension

**KA** = coupled unit

**M** = overall awning width  $MA + 100 \text{ mm}$

**MA** = *order dimension* = awning fixture width = fixture width

**MB** = bracket fixture range

(M) = motor

dimensions in mm



Operation	standard	optional
crank handle	—	—
hard-wired motor	✓	—
silentec motor (optionally with an external io / RTS receiver)	—	✓
radio-controlled motor io, 868 MHz	—	✓
radio-controlled motor RTS, 433 MHz	—	✓
radio-controlled motor RTS, 433 MHz with manual override	—	—

Awning cover	Fabric pattern no.	Standard	Optional
sunvas <sup>1) 7)</sup>	301.. / 309..–315..	✓	—
perla <sup>2) 5)</sup>	370 ..	—	✓
sunsilk <sup>1) 7)</sup>	324.. / 325.. / 328.. / 369..	✓	—
perla FR <sup>1) 5)</sup>	374.. / 375..	—	✓
perfotex <sup>2)</sup>	331.. / 332..	✓	—
transolair <sup>3) 6)</sup>	338..	—	✓
transolair (120 cm)	339..	—	✓
vuscreen Alu	317..	—	—
Soltis Perform 92 <sup>4)</sup>	92-20..	—	✓
Glass fibre screen	272..	—	—
Standard fabric panel widths			
1) 60 cm	2) 120 cm	3) 84 cm	
4) 88.5 cm	5) Only with tracfix	6) Max. extension 600 cm	

7) In the case of striped patterns, an even repeat at every second seam in the seam area is not possible.

### Coupled Awning

2–5 fields, 1 motor per field

alternatively 2 fields, 1 motor / 3 fields, 2 motors / 4 fields, 2 motors

maximum field dimensions: see dimension overview for a single unit

### General information

Different extensions in coupled awnings are available. In different awning widths, the rolling up characteristics of the covers may also be visually different. This affects neither the functionality of the awning nor the service life of the cover.

### Shadeplus / drop valance

not available

### Optional accessories

tracfix – the cover is held in the guide tracks by a zip

storm safety bracket for the cassette

wall sealing profile

more than one motor in coupled units which can be operated independently of one another

automatic controls (light, wind, rain)

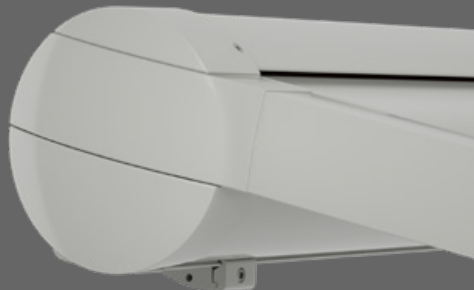
### Frame colours

#### Standard colours

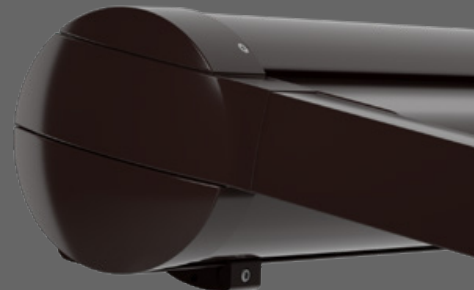
traffic white, RAL 9016



metallic aluminium, RAL 9006



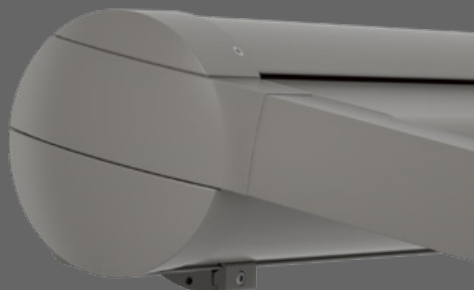
grey brown, similar to RAL 8019



off-white textured finish, 5233 <sup>1)</sup>



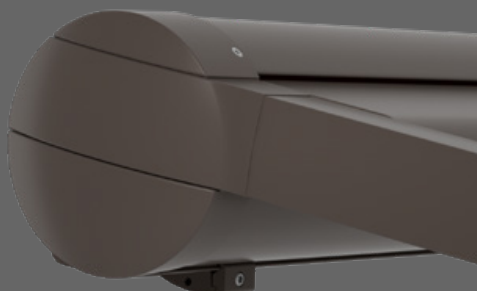
stone grey metallic, 5215 <sup>1)</sup>



anthracite metallic, 5204 <sup>1)</sup>



Havana brown textured finish, 5229 <sup>1)</sup>



**1)** textured finish

#### Non-standard powder-coated finish

Bespoke frame colours at a surcharge – matt, metallic and pearl finishes as well as other colour ranges (DB, Tiger etc.) on request. All frame colours are available at a surcharge with enhanced corrosion protection.

Colours may differ slightly from those depicted in both hue and finish.

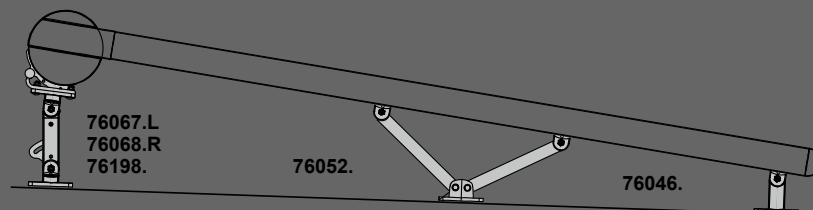
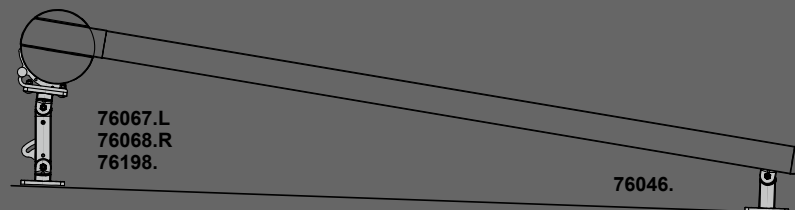
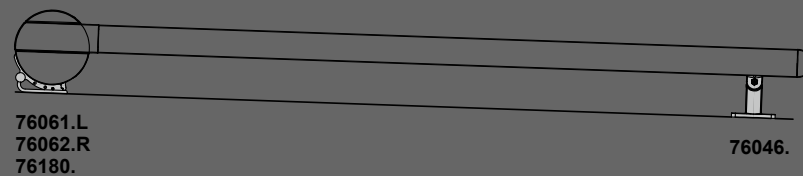
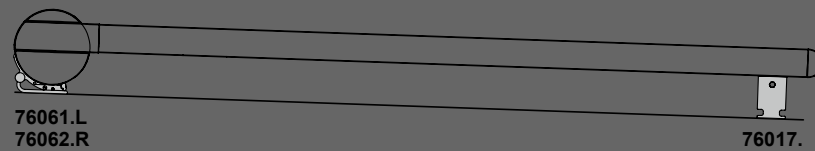




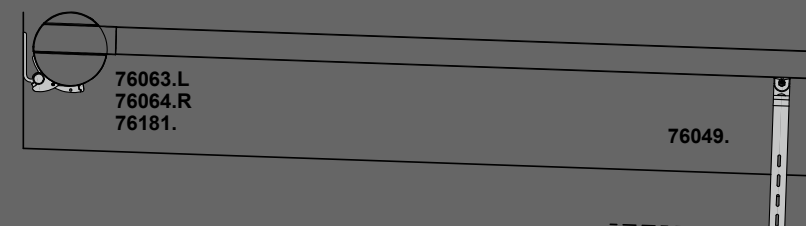
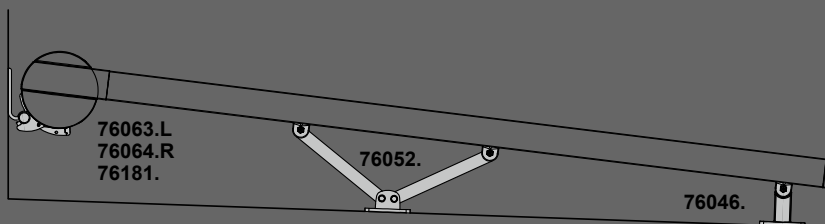
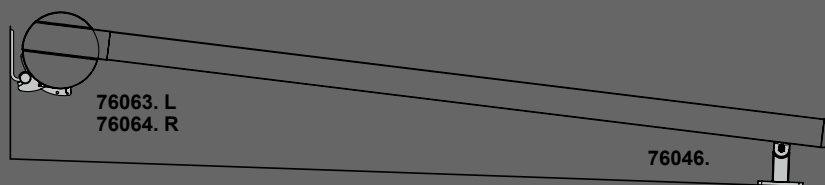
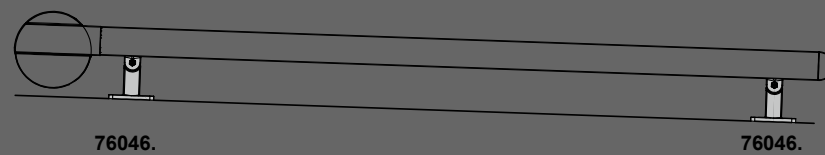
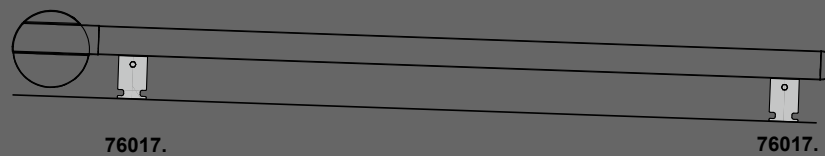




## Bellfort Roof Awning | Fixing Specifications | Fixing Options I



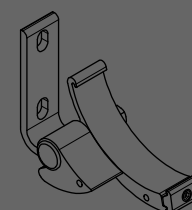
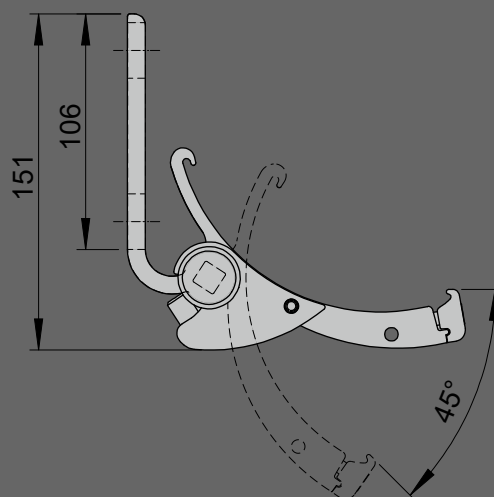
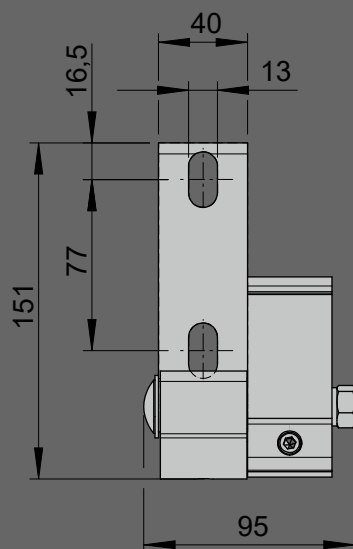
# Bellfort Roof Awning | Fixing Specifications | Fixing Options II





### Face fixture

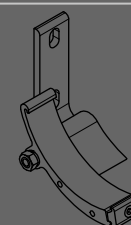
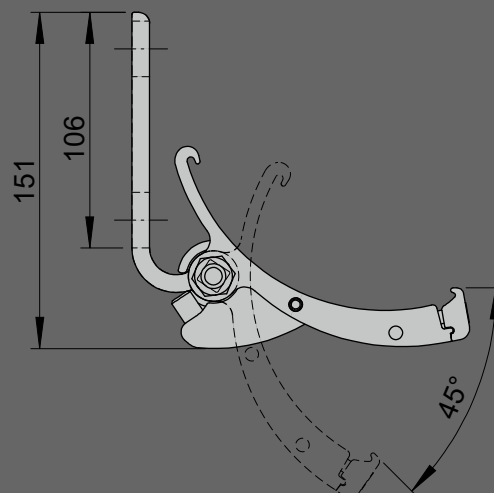
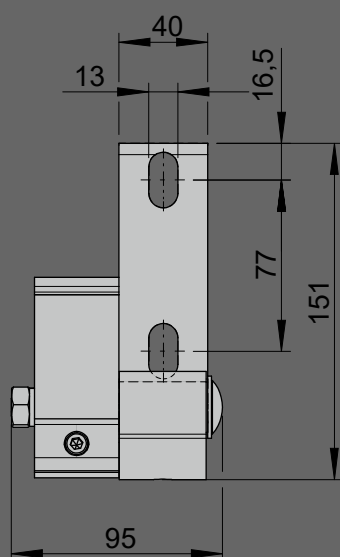
Face fixture cassette bracket, left



face fixture cassette  
bracket  
  
left  
  
pitch adjustment range  
5°–45°

**76063.**

face fixture cassette bracket, right



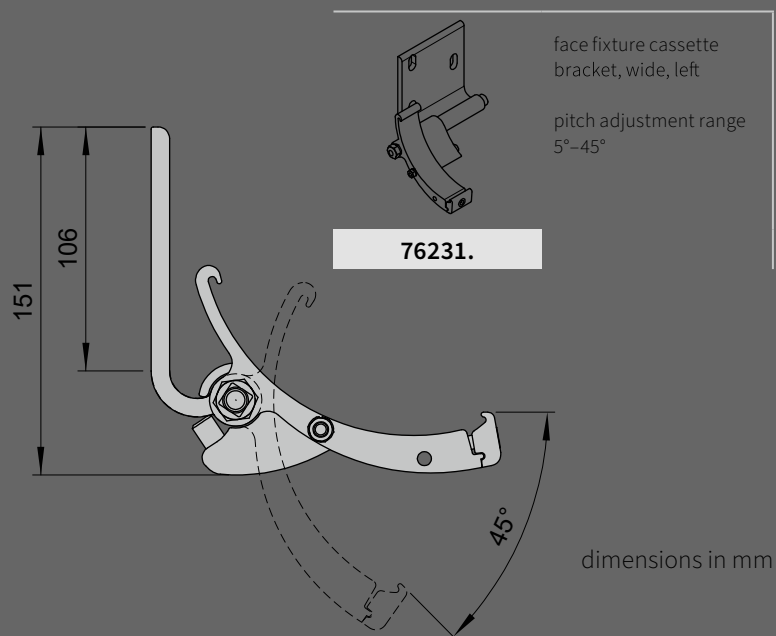
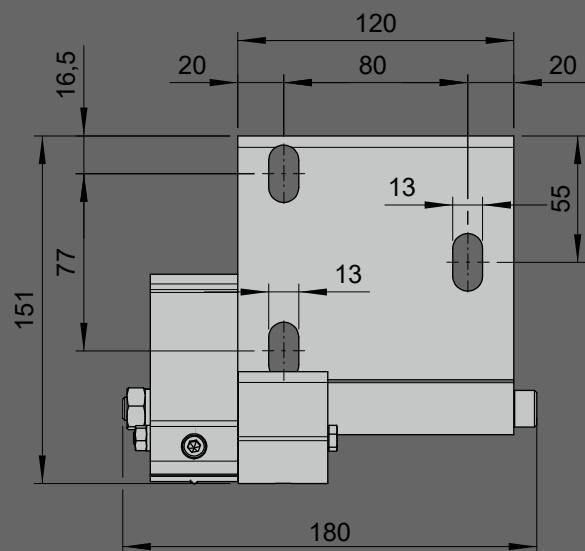
face fixture cassette  
bracket  
  
right  
  
pitch adjustment range  
5°–45°

**76064.**

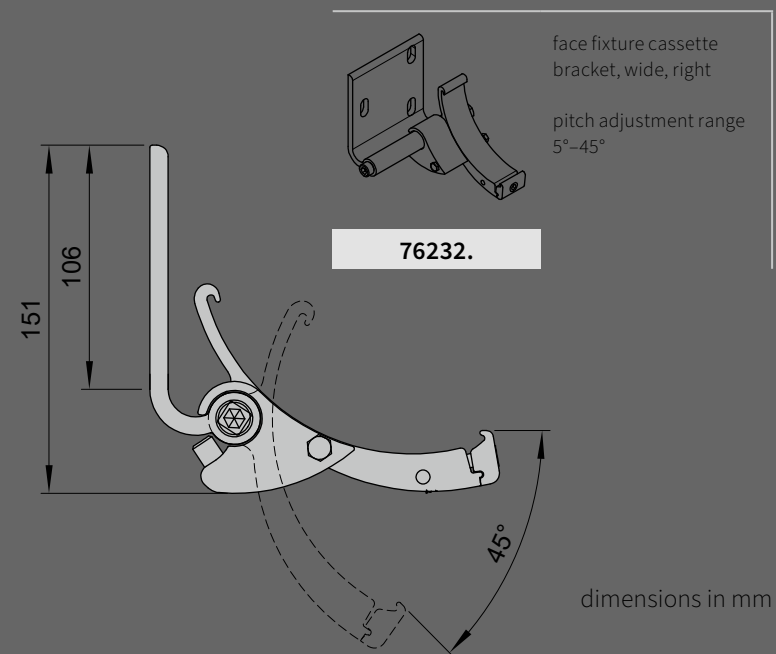
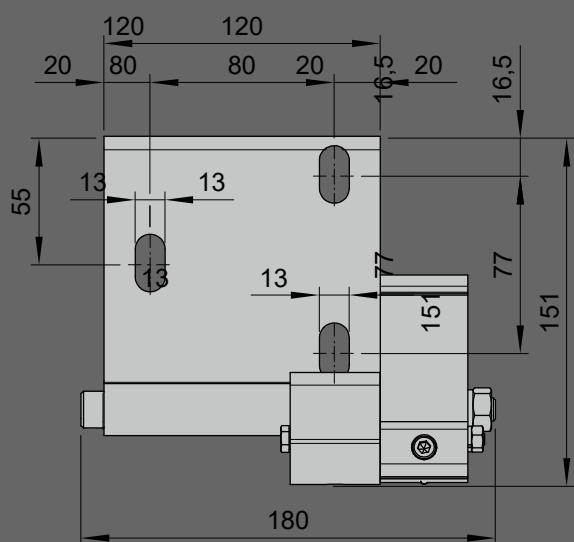
dimensions in mm

dimensions in mm

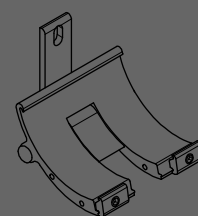
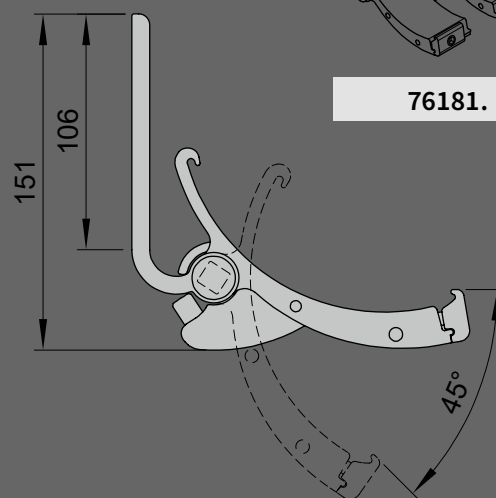
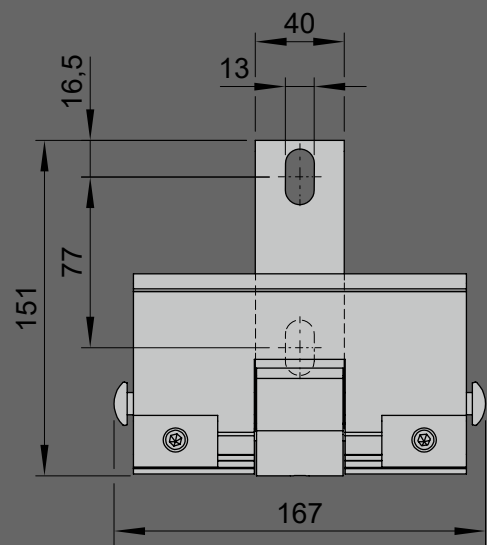
Face fixture cassette bracket, wide, left



Face fixture cassette bracket, wide, right



### Coupling cassette bracket (central in coupled units)



**76181.**

coupling cassette bracket

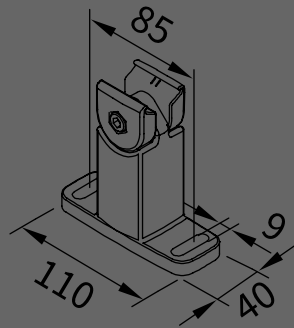
central

face fixture

pitch adjustment range  
5°-45°

dimensions in mm

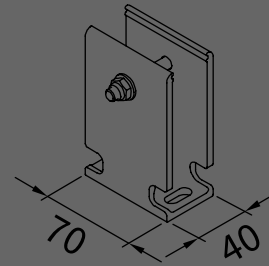




track bracket,  
with adjustable head

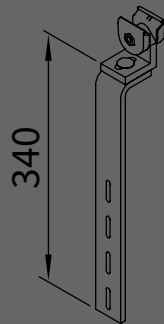
100 mm

**76046.**



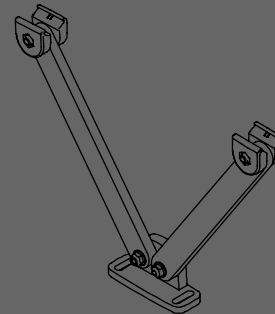
track bracket for rigid  
track-only fixture

**76017.**



flat track bracket  
for lateral fixture  
with adjustable head

**76049.**



vario-V bracket for track  
fixture

**76052.**



